

From: "Hillsong - Cornerstone"

# Cornerstone

(Easter Release Version)

by

ERIC LILJERO, REUBEN MORGAN  
and JONAS MYRIN

---

Lyrics by ERIC LILJERO, REUBEN MORGAN,  
JONAS MYRIN and EDWARD MOTE


Published Under License From

Hillsong Music Publishing

© 2011 Hillsong Music Publishing (APRA). All rights reserved.  
PO Box 1195 Castle Hill NSW 1765 Australia Ph: +61 2 8853 5353 Fx: +61 2 8846 4625  
Email: [publishing@hillsong.com](mailto:publishing@hillsong.com) CCLI Song No. 6158927

Authorized for use by *David Meek*

NOTICE: Purchasers of this musical file are entitled to use it for their personal enjoyment and musical fulfillment. However, any duplication, adaptation, arranging and/or transmission of this copyrighted music requires the written consent of the copyright owner(s) and of Hillsong Music Publishing. Unauthorized uses are infringements of the copyright laws of the United States and other countries and may subject the user to civil and/or criminal penalties.

 <http://www.musicnotes.com>

# CORNERSTONE

(Easter Release Version)

Verses from "The Solid Rock" by  
EDWARD MOTE (Traditional)

Words and Music by  
ERIC LILJERO, REUBEN MORGAN  
& JONAS MYRIN

With purpose ♩ = 71

Chord progression: C, Am

The first system of piano accompaniment consists of three measures. The right hand features a steady eighth-note accompaniment with chords, while the left hand plays a simple eighth-note bass line. Chords are indicated as C and Am.

Chord progression: F, G

The second system of piano accompaniment consists of three measures. The right hand continues the eighth-note accompaniment with chords, and the left hand maintains the eighth-note bass line. Chords are indicated as F and G.

Verse 1:

Chord progression: C, F

7  
My hope is built on noth-ing less. than Je - sus' blood and

The vocal line begins at measure 7 with the lyrics "My hope is built on noth-ing less. than Je - sus' blood and". The piano accompaniment continues with the same eighth-note accompaniment and bass line as the previous systems, with chords C and F indicated.

right-eous - ness. I dare not trust the sweet-est frame,

13 F G C *pno. e.gtr*

but whol-ly trust in Je - sus' Name.

16 C Csus4 C *Chorus 1:*

- sus' Name. Christ a -

18 F Am G C/E F Am

lone. Cor - ner - stone. Weak made strong in the Sav - ior's love. \_

21 G C F Am

Through the storm, He is

23 G C *pno. e.gtr*

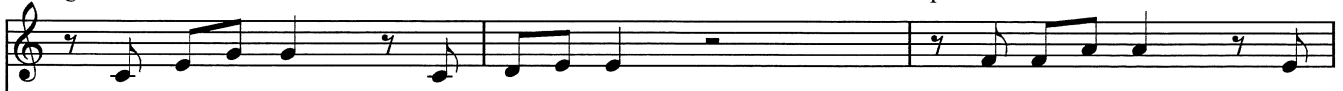
Lord. Lord of all.

*Verses 2 & 3: softly on D.S.*

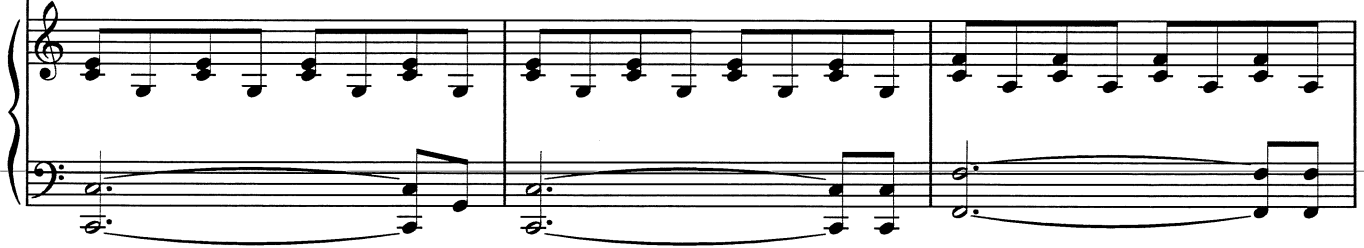
26

C

F



When dark-ness seems to hide His face, I rest on His un -  
When He shall come with trum-pet sound, oh may I then in



29

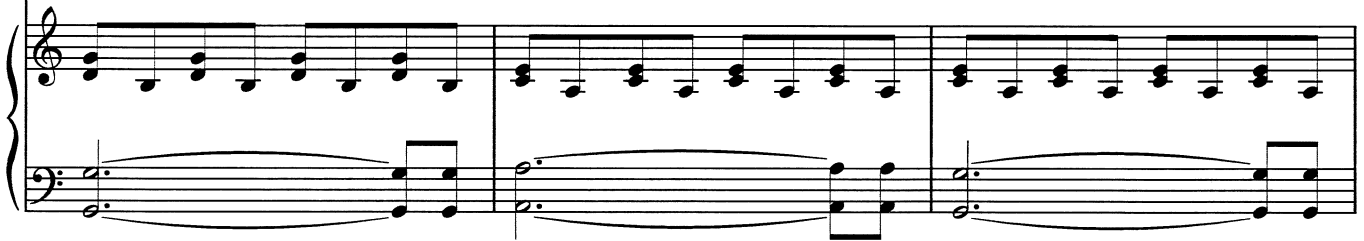
G

Am

Am/G




chang-ing grace. \_\_\_\_\_ In ev - 'ry high and storm - y gale,  
Him be found. \_\_\_\_\_ Dressed in His right - eous - ness a - lone.



32

F

G

To Coda  C



my an - chor holds with - in \_\_\_\_\_ the veil. \_  
Fault - less stand be - fore \_\_\_\_\_



Chorus 2:

34

F G C

My an-chor holds with-in \_\_\_\_\_ the veil. \_ Christ a -

37

F Am G C/E F Am

lone. Cor - ner - stone. Weak made strong in the Sav - ior's love. \_

40

G C F Am G

\_\_\_\_ Through the storm, He is Lord. Lord of

1.  
43 C

*pno. e.gtr*

Am

all.

He is Lord.

Musical notation for the first system, including vocal line and piano accompaniment. The piano part features a steady eighth-note accompaniment in the left hand and a more active melody in the right hand.

46

F

G

C/E

Lord of all.

Christ a -

Musical notation for the second system, including vocal line and piano accompaniment. The piano accompaniment continues with a consistent rhythmic pattern.

2.

49 C

*pno. e.gtr*

*Chorus 3:*

F

Am

all.

Christ a - lone. Cor - ner -

Musical notation for the third system, including vocal line and piano accompaniment. The piano part features a steady eighth-note accompaniment.

52

G

C/E

F

Am

stone. Weak made strong in the Sav - ior's love.

Musical notation for the fourth system, including vocal line and piano accompaniment. The piano accompaniment continues with a consistent rhythmic pattern.

54 G C F Am G

Through the storm, He is Lord. Lord of

57 C

all.

*D.S. al Coda*

59

*Coda*



61 C

the throne.